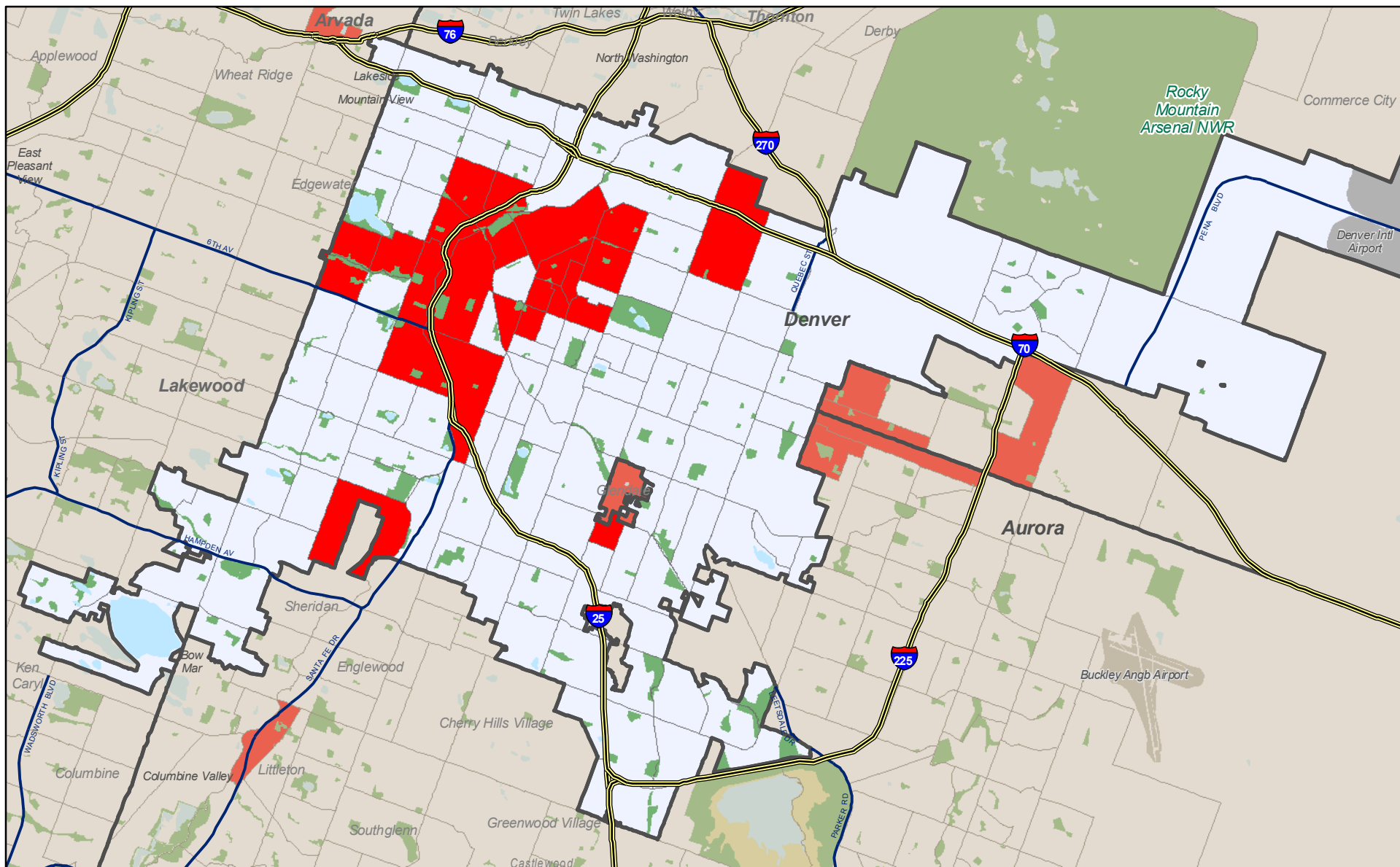








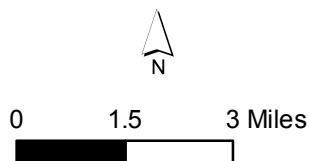
"Hard to count" Census tracts in Denver County, CO based on 2000 Census data



-  Interstate
-  Major road / highway
-  County boundary
-  Parks / open space

Census tracts in 2000

-  Hard to count (Census definition)
 -  Other
- ("Other" includes tracts with Hard to Count values under 70 or tracts with low populations or special characteristics such as a large portion of group quarters or senior housing)



The Census Bureau describes "hard to count" tracts as areas with the greatest challenges to counting the local population for the upcoming 2010 decennial census. Areas with the highest scores (over 70) are likely to be the areas with relatively high undercount rates.