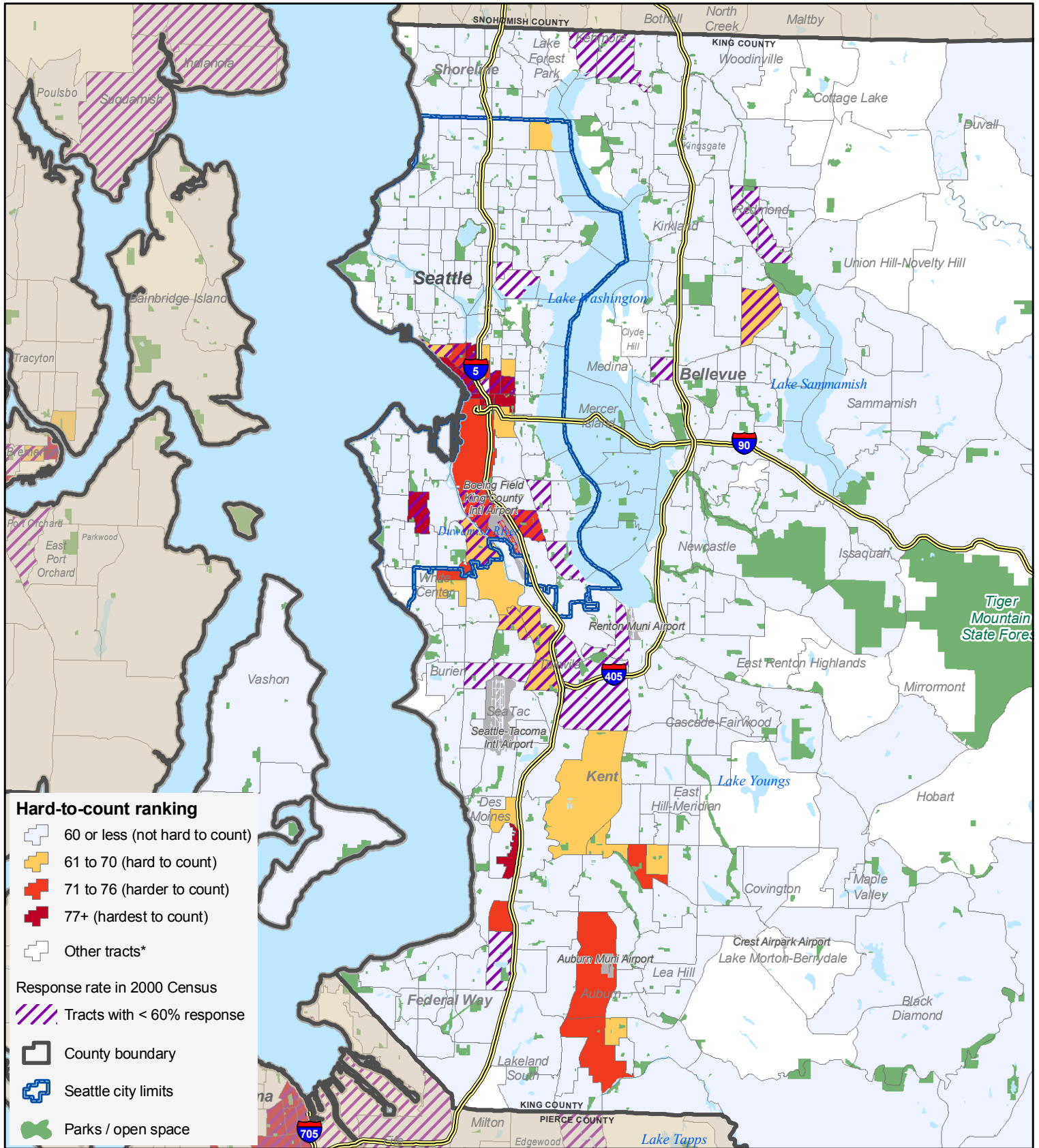


"Hard to count" Census tracts in Seattle

based on 2000 Census, compared with 2000 Census response rates



*NOTE: "Other tracts" either have < 100 housing units, or population size < 250, or group quarters > 50% or > 35% population aged 65+, or where the Hard To Count value was 0.



The Census Bureau describes "hard to count" tracts as areas with the greatest challenges to counting the local population for the upcoming 2010 decennial census.