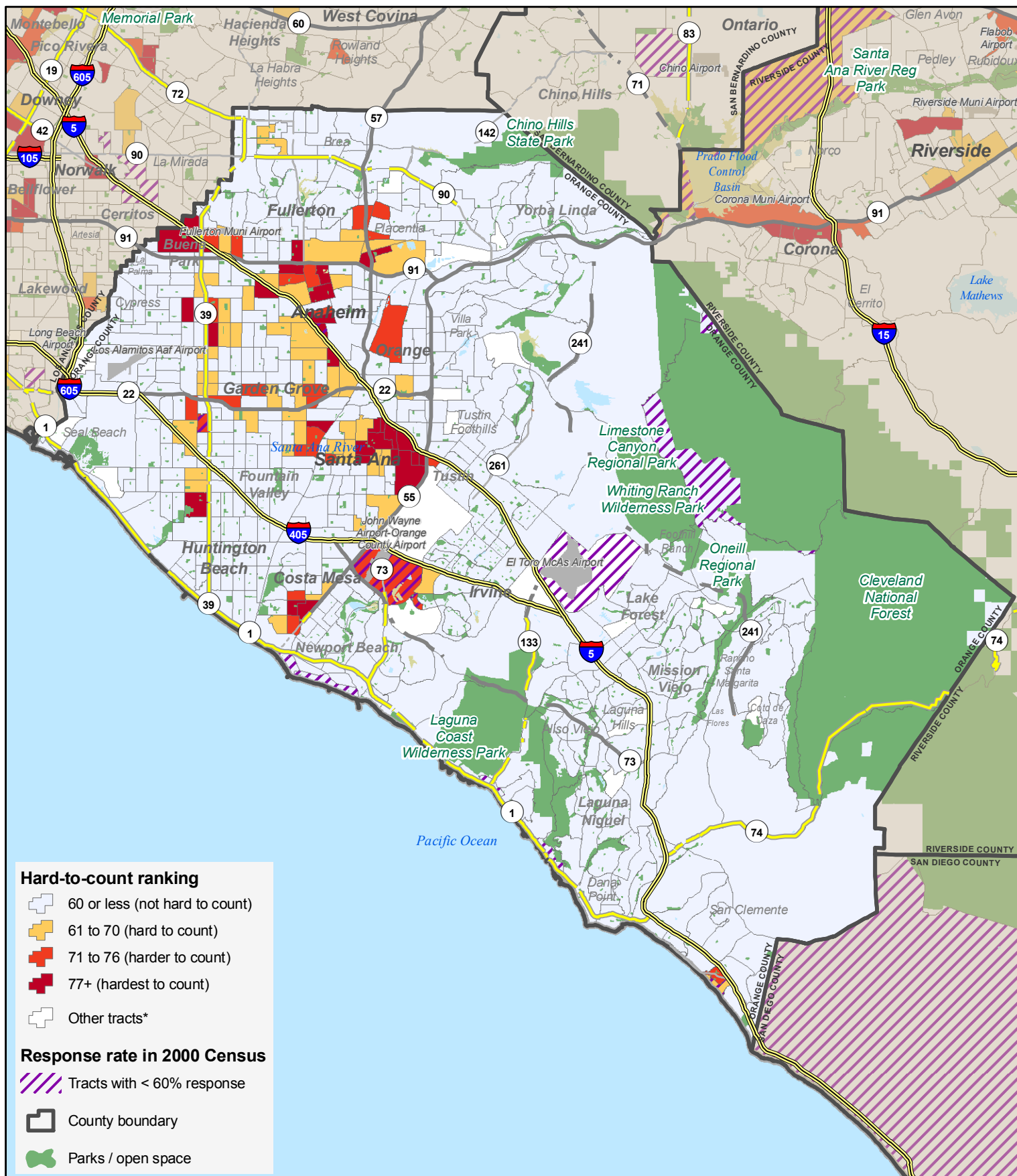
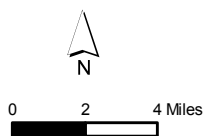


# "Hard to count" Census tracts in Orange Co., CA based on 2000 Census, compared with 2000 Census response rates



\*NOTE: "Other tracts" either have < 100 housing units, or population size < 250, or group quarters > 50% or > 35% population aged 65+, or where the Hard To Count value was 0.

Cartography by the Center for Urban Research, CUNY, 2009 (based in part on "ESRI Data & Maps" and ColorBrewer.org).



The Census Bureau describes "hard to count" tracts as areas with the greatest challenges to counting the local population for the upcoming 2010 decennial census.